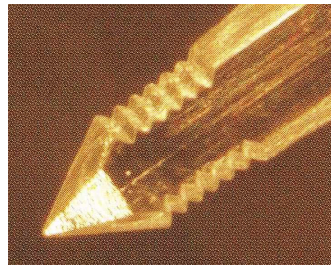


# **Pinnix<sup>®</sup> Light**

**The First Safety Resin Lancet  
in the World for Diabetes**



## **Special Feature**

### **Environment-friendly**

- **Pinnix<sup>®</sup> Light is made of vegetable resin, not of metal.**

### **Simple operation**

- **Easy-hold-designed Pinnix<sup>®</sup> Light can collect your blood in easy operation.**

### **Softly touch**

- **Pinnix<sup>®</sup> Light does not leave an unpleasant pain after puncture, and blood stops early.**

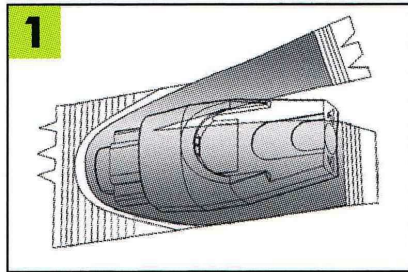
### **Safety design and disposable**

- **Pinnix<sup>®</sup> Light locks a tip of needle inside after puncture.**

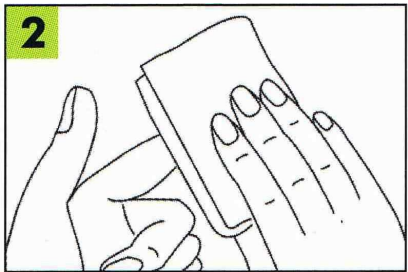
### **Individually sealed package**

- **Pinnix<sup>®</sup> Light is individually packaged one by one to ensure clean and sterile.**

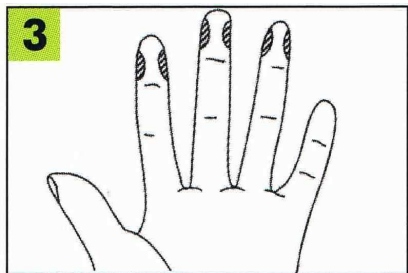
## Instructions For Use



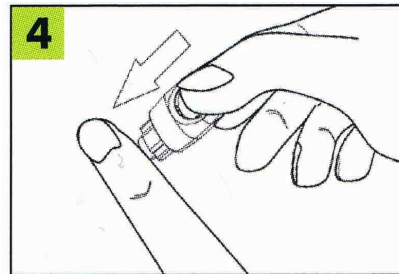
**1** Take out Pinnix® Light from sealed package.



**2** Disinfect the puncture point with antiseptic cotton and wait a minute to dry.

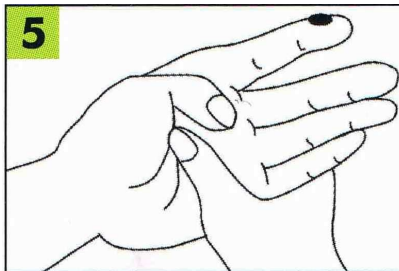


**3** Both sides of a fingertip are recommended to the point of puncture.



**4** Hold Pinnix® light outer case firmly. Set inner case of Pinnix® light at the point of puncture of fingertip and push the outer case to fingertip. With a click, an edge of needle pops out for a moment. After puncturing the needle returns to the case immediately and is locked.

\*Please push outer case firmly to fingertip until you hear a click otherwise puncture will fail.



**5** Please extract blood from a stab. Stop bleeding with gauze, plaster, etc.

About Pinnix® Light

Medical equipment approval number of MHLW in Japan	22300BZX00293000
General name :	Single-use auto lancet
Japanese Medical Device Nomenclature(JMDN) Code No.	37243002
Material of the needle	Polylactic acid
Size of a needle	Width 0.4mm(30G equivalent)